



TABLE OF CONTENTS

Food Industrial Chemical Mills Mixers/Blenders	2
IBC Mixing System IBC Series	2
High-Speed Double-Shaft Mixer	4
Ribbon Mixer RM Series	8
Rotary Cone Mixer RC Series	11





FOOD INDUSTRIAL CHEMICAL MILLS MIXERS/BLENDERS

IBC MIXING SYSTEM IBC SERIES

SKU: N/A

IBC Mixing System IBC Series

Features

Treatment: Mixer

Material Properties: Non-Oily

Capacity: 100L~2000L/Per Lot

Production Methods: Single Machine、Turnkey

Introduction

Changeable bins can be either storage or mixing.

Efficiently reduce cross-contamination, great mixing performance.

IBC Mixing System

- Changeable bins along with a mixing turnkey system
- Less contact, less dead angle, reduces cross-contamination
- Multi-angle leads to higher efficiency of mixing ability
- IBC Mixing System can be customized to different volumes of barrels
- Can coordinate with transporting, weighing, storage, pellet machine, and packing machine.
- Can be equipped with a spray ball or CIP (Cleaning in Place), reduce labor cost, and avoid bacterial contamination through people contact.
- Individual raw material for one single bin
- Can apply a multi-volume capacity bin
- No cross-contamination issue
- Durable, fewer consumables
- Could coordinate with the BFM® Spigot set
- Machine Material: SUS316L





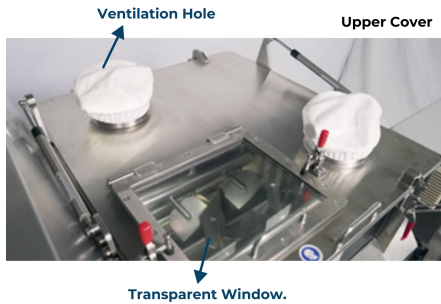
QUICK 3PL
LOGISTICS SIMPLIFIED

- Easy clean, storage
- IBC Mixing System can be equipped with a spray ball or CIP (Cleaning in Place), reduce labor cost, and avoid bacterial contamination by people's contact.

Category: [Food Industrial Chemical Mills Mixers/Blenders](#)



QUICK 3PL
LOGISTICS SIMPLIFIED



HIGH-SPEED DOUBLE-SHAFT MIXER

SKU: N/A

High-Speed Double-Shaft Mixer

Features

- High-Efficiency Mixing
- Uniform Mixing
- Energy-Efficient, Low-Maintenance
- Convenient Operation with Expandable Features
- Applicable to Powders with Varied Densities Across Industries.

Introduction

Designed for efficient mixing, the Double-Shaft Mixer is a high-quality, professional mixer featuring two parallel shafts with cross-shaped paddles rotating in opposite directions.

This durable High-Speed Double-Shaft Mixer generates centrifugal force, lifting materials to the top of the chamber, where they experience a brief "zero-gravity" effect before falling back down. This ensures thorough recirculation and uniform blending, making it an effective mixer for foodstuff, chemical, and biotech applications.

The synchronized paddles shear and separate materials effectively, preventing clumping.

Mixer Benefit

1. High-Speed Double-Shaft Mixer provides a quick, consistent, and efficient mixing solution with minimal effort.
2. Reduces mixing time (approximately 30 seconds to 5 minutes).
3. High-Speed Double-Shaft Mixer is easy to maintain and clean.
4. Quick discharge.

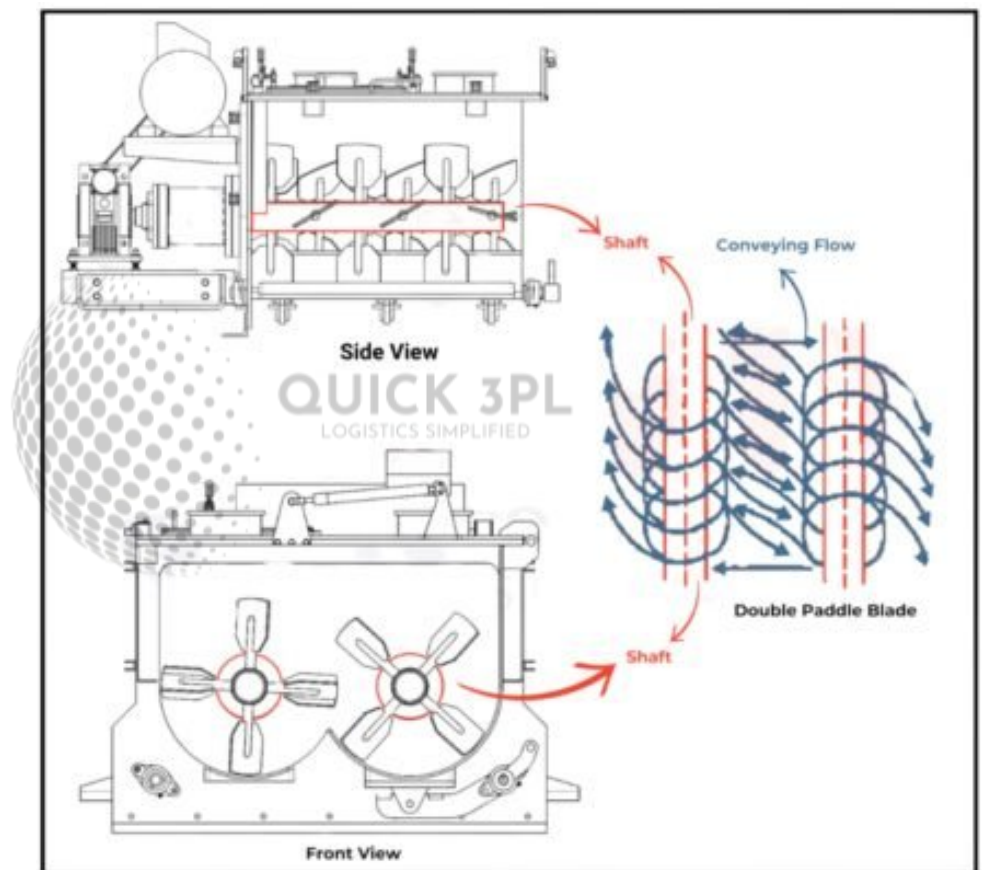
Operation Principle

- Two parallel paddles:
The machine has two paddle shafts that are placed side by side and spin in opposite directions.
- Cross-shaped paddles on each shaft:
Each shaft has paddles shaped like a cross
- Synchronized operation:
The two shafts work together at the same time, with their paddles moving in patterns that cross each other but don't touch.



- Centrifugal force: As the paddles spin, they create a force that throws the materials to the top of the chamber.
- Also called a zero-gravity mixer: When the materials reach the top of the curve, they experience a moment where they seem to float before falling back down.
- Recirculating and mixing: The paddles keep the materials moving in a loop, mixing them repeatedly inside the chamber.

Shearing and separating: As the two shafts work together, they cut through and separate the materials, helping them mix quickly and evenly.



Advantages



Feature	Description
High-Efficiency Mixing	<ul style="list-style-type: none"> • Double-shaft paddle blades shorten mixing time (0.5-5 minutes per batch, depending on material). • Closed, high-speed mixing with rapid pneumatic discharge and minimal residue.
Uniform Mixing	<ul style="list-style-type: none"> • Zero-gravity mixing with no segregation in varied materials.. • Coefficient of variation under 10%, liquid addition up to 20%.
Energy-Efficient, Low-Maintenance	<ul style="list-style-type: none"> • Inverter motor saves energy, with a PLC control system. • Fully open mixing chamber for easy cleaning.
Convenient Operation with Expandable Features	<ul style="list-style-type: none"> • Optional upper covers, vacuum feed, and transparent window. • Dust-reducing discharge options and touchscreen HMI for real-time alerts. • Compatible with CIP cleaning
Applicability	Applicable to Powders with Varied Densities Across Industries.

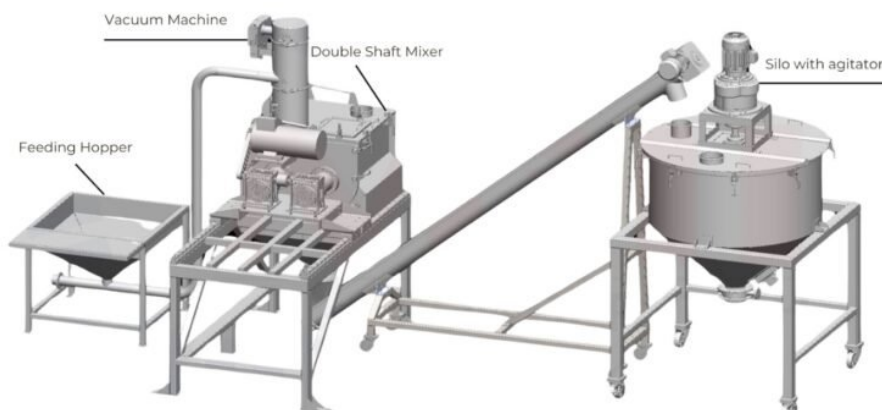
Specification

Model	VOLUME (KG/L)	MOTOR (HP)	Dimensions (L*W*H*MM)
RM-100	100/260	2	2210*600*1450
RM-200	200/500	3	2310*710*1660
RM-300	300/700	5	2310*900*1750
RM-500	500/1200	7 1/2	2790*960*1830
RM-1000	1000/2400	15	3420*1220*2150
RM-2000	2000/4800	25	3900*1350*2450
RM-3000	3000/6500	40	3700*1850*2803

Height from floor to outlet: 450 mm

According to the different characteristics of materials and equipment, the data would be changed.

Reference Turnkey System



Category: [Food Industrial Chemical Mills Mixers/Blenders](#)



QUICK 3PL

LOGISTICS SIMPLIFIED



QUICK 3PL

LOGISTICS SIMPLIFIED



RIBBON MIXER RM SERIES

SKU: N/A

Ribbon Mixer RM Series

Features

Treatment: Mixer

Material Properties: Oily and Non-Oily

Capacity: 50kg ~ 3000kg/Per Lot

Production Methods: Single Machine

Introduction

Ribbon Mixer is designed with a Twin mixing Ribbon. During mixing, twin ribbons can mix powder in a convective direction, inner and outer, up and down, to evenly mix powder in a short time.

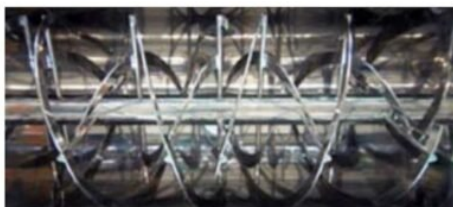
"Air leakproof device" is a patent design to prevent powder pollution. According to the particular powder, a Heating system, a Liquid Spraying system, and a high-speed chopper can be installed in the mixer to solve the special mixing requirement.

Ribbon Mixer RM Series

- The mixing blade is a spiral "S" type design.
- Excellent and high-speed mixing efficiency.
- Powder won't be raised mixing operation.
- Complete and thorough mixing of raw materials by ribbon agitator, which creates two layers and a counter movement of flows.

RM-500
DOUBLE RIBBON AGITATORS INNER
CONSTRUCTION

RM-100
DOUBLE RIBBON AGITATORS INNER
CONSTRUCTION





ADVANTAGES

Material: Steel thickness of outer shell, blade, and cover is two times that of others. The durability is over 20 years.

Speed: The Double spiral ribbon blade makes a higher mixing speed than others.

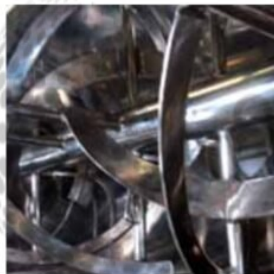
Bearing: The Teflon seal can prevent powder leaks. Split assembly can separate power from machine grease.

Convenient: Single-sided assembly makes maintenance easier.

Output: Power discharge via "butterfly valve". A rigid seal will avoid powder leaks. Liquid mixing & washing are applicable.

Independent control panel: Let cleaning safety.

► INNER MIXING BLADE



► INNER MIXING BLADE WITH SCRAPER



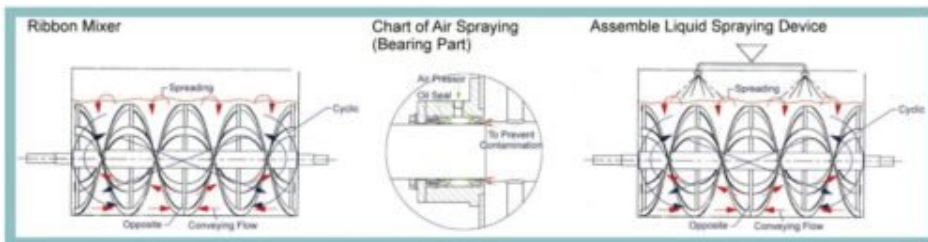
► WITH OIL SPRAYING DEVICE





QUICK 3PL

LOGISTICS SIMPLIFIED

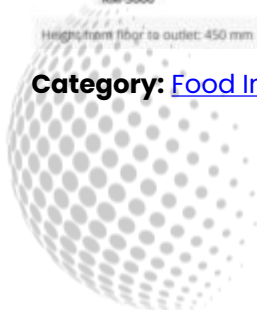


Model	Motor (HP)	SIZE (MM)	Dimensions (L*W*H*MM)				
			Main Machine	Material Storage	Dust Collector	Blower	Exhaust Blower

Model	VOLUME (KG/L)	MOTOR (HP)	Dimensions (L*W*H*MM)
RM-100	100/260	2	2210*600*1450
RM-200	200/500	3	2310*710*1660
RM-300	300/700	5	2310*900*1750
RM-500	500/1200	7 1/2	2790*960*1830
RM-1000	1000/2400	15	3420*1220*2150
RM-2000	2000/4800	25	3900*1350*2450
RM-3000	3000/6500	40	3700*1850*2803

Height from floor to outlet: 450 mm

Category: [Food Industrial Chemical Mills Mixers/Blenders](#)



QUICK 3PL

LOGISTICS SIMPLIFIED



ROTARY CONE MIXER RC SERIES

SKU: N/A

Rotary Cone Mixer RC Series

Features

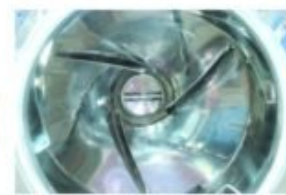
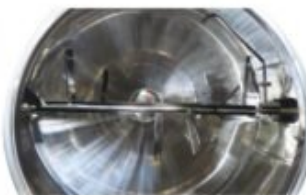
- **Treatment:** Mixer
- **Material Properties:** Oily, Non-Oily
- **Capacity:** 10kg ~ 1500kg/Per Lot
- **Production Methods:** Single Machine

Introduction

Outer barrel and inner arm run at different speeds and in different directions. High mixing speed, high uniformity, and easy cleaning.

RC Series

- The outer barrel and inner blades are being controlled by separate motors which enhance mixing strength, and having different strength, and having different rotating homogeneous mixing.



Model	VOLUME (KG/L)	MOTOR (HP)		Dimensions (L*W*H*MM)
		Shaft	Outer-Barrel	
RC-50	50/120	1	2	1800*750*1560
RC-100	100/260	2	3	1900*880*1700
RC-200	200/500	2	3	2300*1200*1900
RC-300	300/700	3	5	2430*1300*2100
RC-500	500/1200	3	7 1/2	2800*1450*2400
RC-1000	1000/2400	5	15	3500*1700*2700
RC-2000	2000/5000	15	25	4100*2000*3400
RC-3000	3000/7000	20	40	4500*2500*4600



QUICK 3PL
LOGISTICS SIMPLIFIED

► ROTARY CONE MIXER-RC1000
(CAPACITY:2400KG/BATCH)



Category: [Food Industrial Chemical Mills Mixers/Blenders](#)



QUICK 3PL
LOGISTICS SIMPLIFIED



QUICK 3PL

LOGISTICS SIMPLIFIED



QUICK 3PL

LOGISTICS SIMPLIFIED



INDEX

H

High-Speed Double-Shaft Mixer 3

I

IBC Mixing System IBC Series 1

R

Ribbon Mixer RM Series 7

Rotary Cone Mixer RC Series 10

